



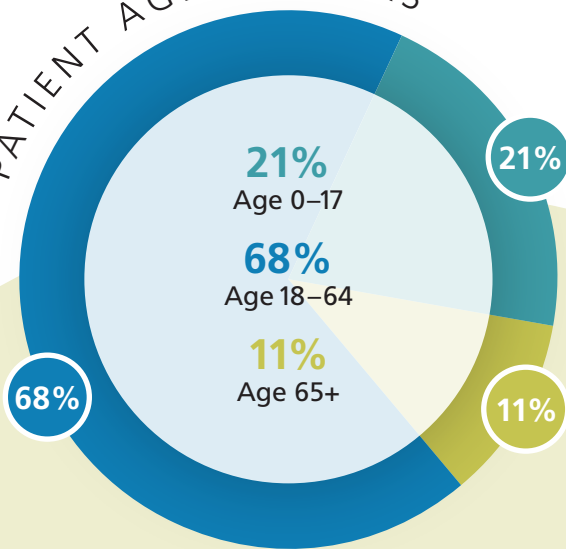
Patients Served: **30,831**

Total Patient Visits: **124,674**

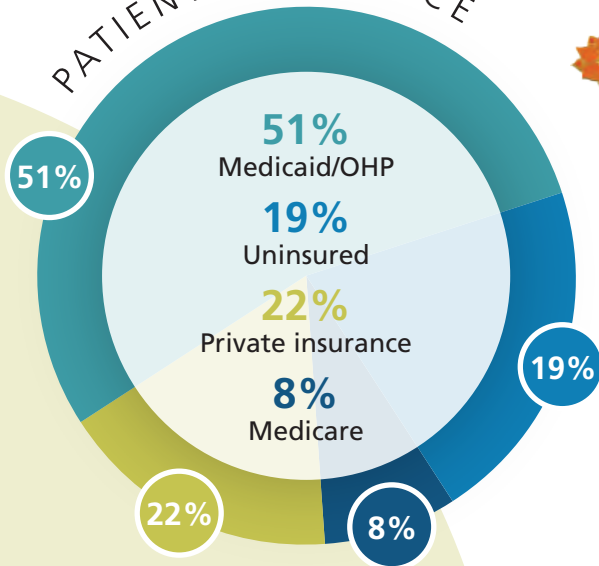
Link to full report:

www.laclinicahealth.org/annual

PATIENT AGE IN YEARS



PATIENT INSURANCE



Special Populations

3,533 patients are living without homes

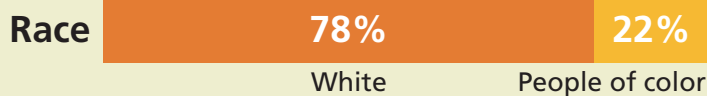
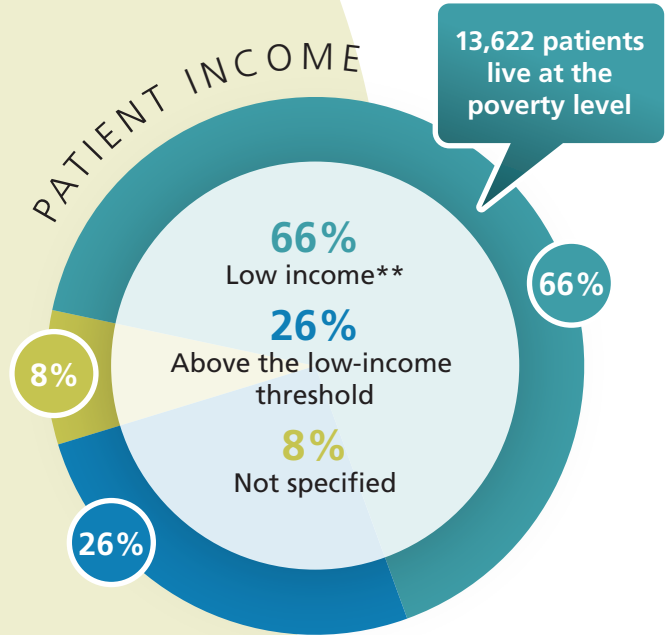
2,829 patients are agricultural workers

1,450 patients identify as LGBTQIA+*

6,329 patients prefer a language other than English

* Lesbian, gay, bisexual, transgender, queer, questioning, intersex, and asexual

PATIENT INCOME



** At or below 200 percent of federal poverty level.



LA CLINICA

Guide to Services

Health Center Locations

Acute Care Clinic
616 Market St., Medford, OR 97504

Birch Grove Health Center
910 S. Central Ave., Medford, OR 97501

Central Point Health Center
4940 Hamrick Road, Central Point, OR 97502

East Medford Dental Clinic
1113 Progress Drive, Medford, OR 97504

Phoenix Health Center
3617 S. Pacific Highway, Medford, OR 97501

Wellness Center
730 Biddle Road, Medford, OR 97504

West Medford Health Center
1307 W. Main St., Medford, OR 97501

Women's Health Center
221 W. Stewart Ave., Suite 101, Medford, OR 97501

La Clinica on the go

Our 40-foot mobile health center is a clinic on wheels that provides medical and emergency dental services to patients at community and school sites. Patients are served on a first-come, first-served basis and pay on an income-based sliding scale. Visit laclinicahealth.org/mobile or call 541-512-3922 for the schedule.

Information: 541-535-6239
Medical appointments: 541-618-1300
Dental appointments: 541-512-3900



La Clinica in schools

Armadillo Technical Institute
106 N. Rose St., Phoenix, OR 97535

Central Point Elementary School
450 S. Fourth St., Central Point, OR 97502

Crater High School
655 N. Third St., Central Point, OR 97502

Hanby Middle School
806 Sixth Ave., Gold Hill, OR 97525

Jackson Elementary School
713 Summit Ave., Medford OR 97501

Jewett Elementary School
1001 Manzanita St., Central Point, OR 97502

Kids Unlimited Academy
821 N. Riverside Ave., Medford, OR 97501

Mae Richardson Elementary
200 W. Pine St., Central Point, OR 97502

Oak Grove Elementary
2838 W. Main St., Medford, OR 97501

Orchard Hill Elementary
1011 La Loma Drive, Medford, OR 97504

Patrick Elementary
1500 Second Ave., Gold Hill, OR 97525

Phoenix Elementary
215 N. Rose St., Phoenix, OR 97535

Sams Valley Elementary School
14325 Table Rock Road, Central Point, OR 97502

Scenic Middle School
1955 Scenic Ave., Central Point, OR 97502

Talent Elementary School
307 Wagner Creek Road, Talent, OR 97540

Talent Middle School
102 Christian Ave., Talent, OR 97540

Washington Elementary
610 Peach St., Medford, OR 97501

